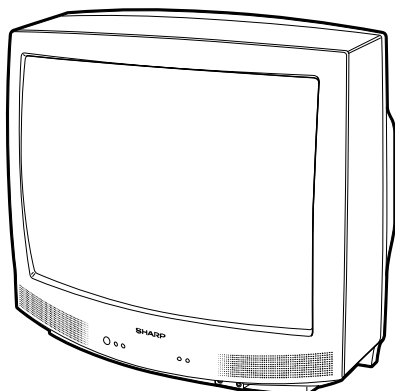


SHARP

SERVICE MANUAL

S21O525R-M100



COLOR TELEVISION

Chassis No. SN-010

MODEL 25R-M100

In the interests of user-safety (Required by safety regulations in some countries) the set should be restored to its original condition and only parts identical to those specified should be used.

CONTENTS

CONTENTS		Page
● ELECTRICAL SPECIFICATIONS		1
● IMPORTANT SERVICE SAFETY PRECAUTION		2
● LOCATION OF USER'S CONTROL		4
● INSTALLATION AND SERVICE INSTRUCTIONS		5
● CHASSIS LAYOUT		11
● BLOCK DIAGRAM		12
● SCHEMATIC DIAGRAMS		13
● PRINTED WIRING BOARD ASSEMBLIES		17
● REPLACEMENT PARTS LIST		22
● PACKING OF THE SET		29

ELECTRICAL SPECIFICATIONS

POWER INPUT	120 V AC 60 Hz
POWER RATING	95 W
PICTURE SIZE	2,032cm ² (315sq inch)
CONVERGENCE	Magnetic
SWEEP DEFLECTION	Magnetic
FOCUS	Hi-Bi-Potential Electrostatic
INTERMEDIATE FREQUENCIES	
Picture IF Carrier Frequency	45.75 MHz
Sound IF Carrier Frequency	41.25 MHz
Color Sub-Carrier Frequency	42.17 MHz
	(Nominal)
AUDIO POWER	
OUTPUT RATING	1.5W (at 10% distortion)

SPEAKER
 SIZE 8 cm (Round)
 VOICE COIL IMPEDANCE 32 ohm at 400 Hz

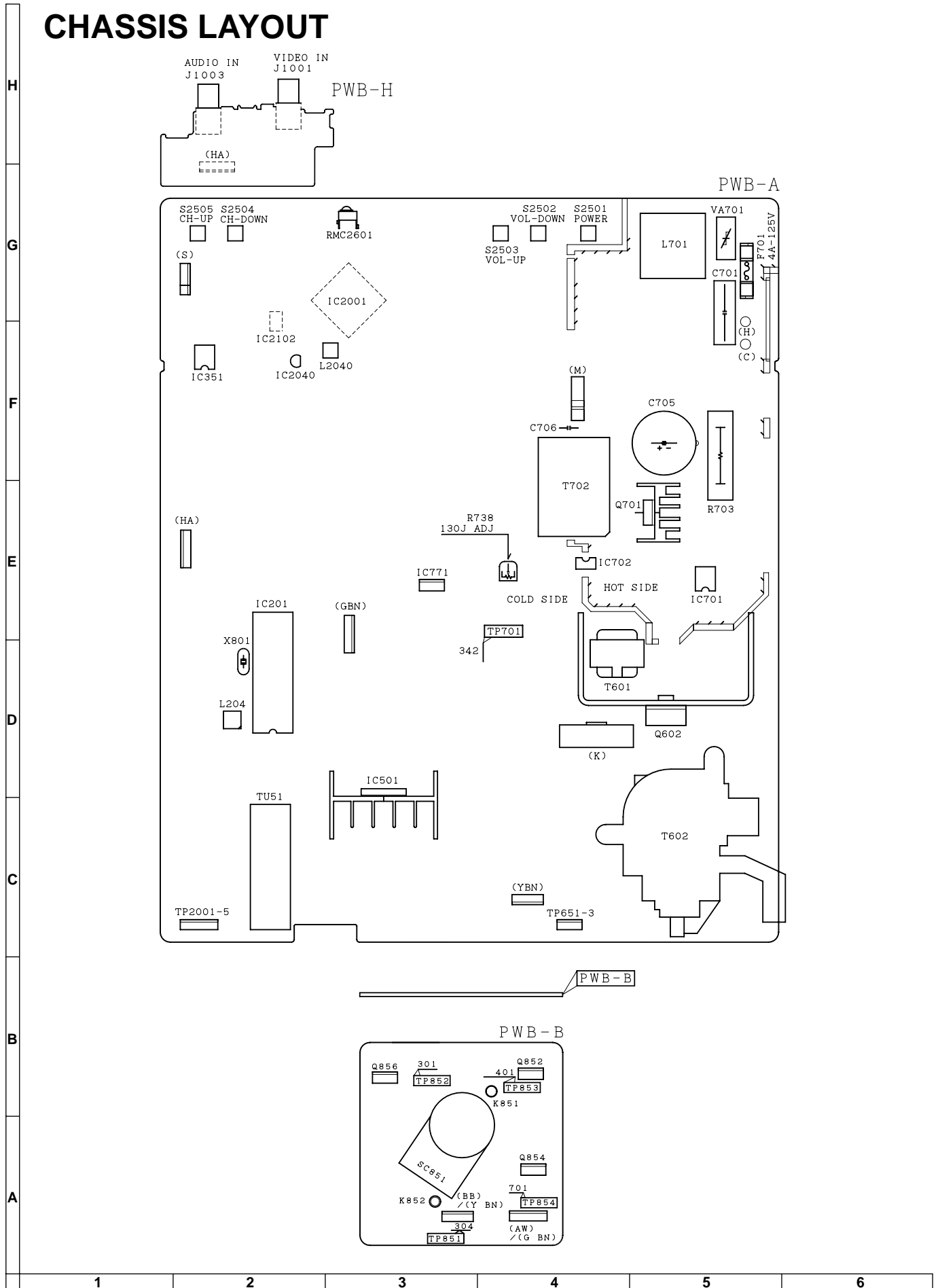
ANTENNA INPUT IMPEDANCE
 VHF/UHF 75 ohm Unbalanced

TUNING RANGES
 VHF-Channels 2 thru 13
 UHF-Channels 14 thru 69
 CATV Channels 1 thru 125

(EIA, Channel Plan U.S.A.)

Specifications are subject to change without prior notice.

CHASSIS LAYOUT





DESCRIPTION OF SCHEMATIC DIAGRAM


NOTES:




1. The unit of resistance "ohm" is omitted.
($K=k\Omega=1000\Omega$, $M=M\Omega$)
2. All resistors are 1/10 watt, unless otherwise noted.
3. All capacitors are μF , unless otherwise noted.
($P=pF=\mu\mu F$)
4. (G) indicates $\pm 2\%$ tolerance may be used.
5. $\overline{\text{---}}$ indicates line isolated ground.

VOLTAGE MEASUREMENT CONDITIONS:

1. All DC voltages are measured with DVM connected between points indicated and chassis ground, line voltage set at 120V AC and all controls set for normal picture unless otherwise indicated.
2. All voltages measured with 1000 μ V B & W or Color signal.

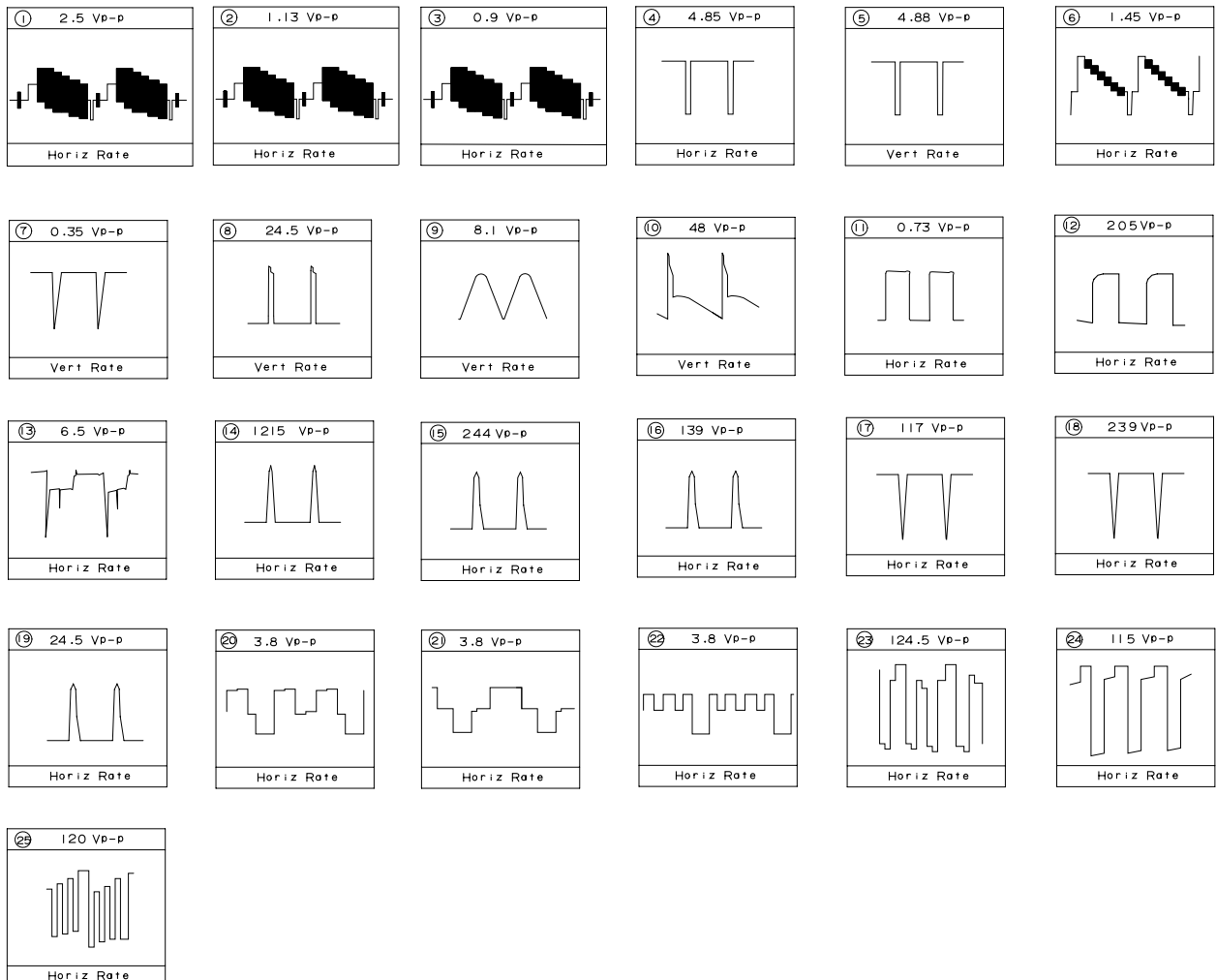
WAVEFORM MEASUREMENT CONDITIONS:

1. Photographs taken on a standard gated color bar signal, the tint setting adjusted for proper color. The wave shapes at the red, green and blue cathodes of the picture tube depend on the tint, color level and picture control.
2.  indicates waveform check points (See chart, waveforms are measured from point indicated to chassis ground.)

 AND SHADED () COMPONENTS
= SAFETY RELATED PARTS.
 MARK= X-RAY RELATED PARTS.

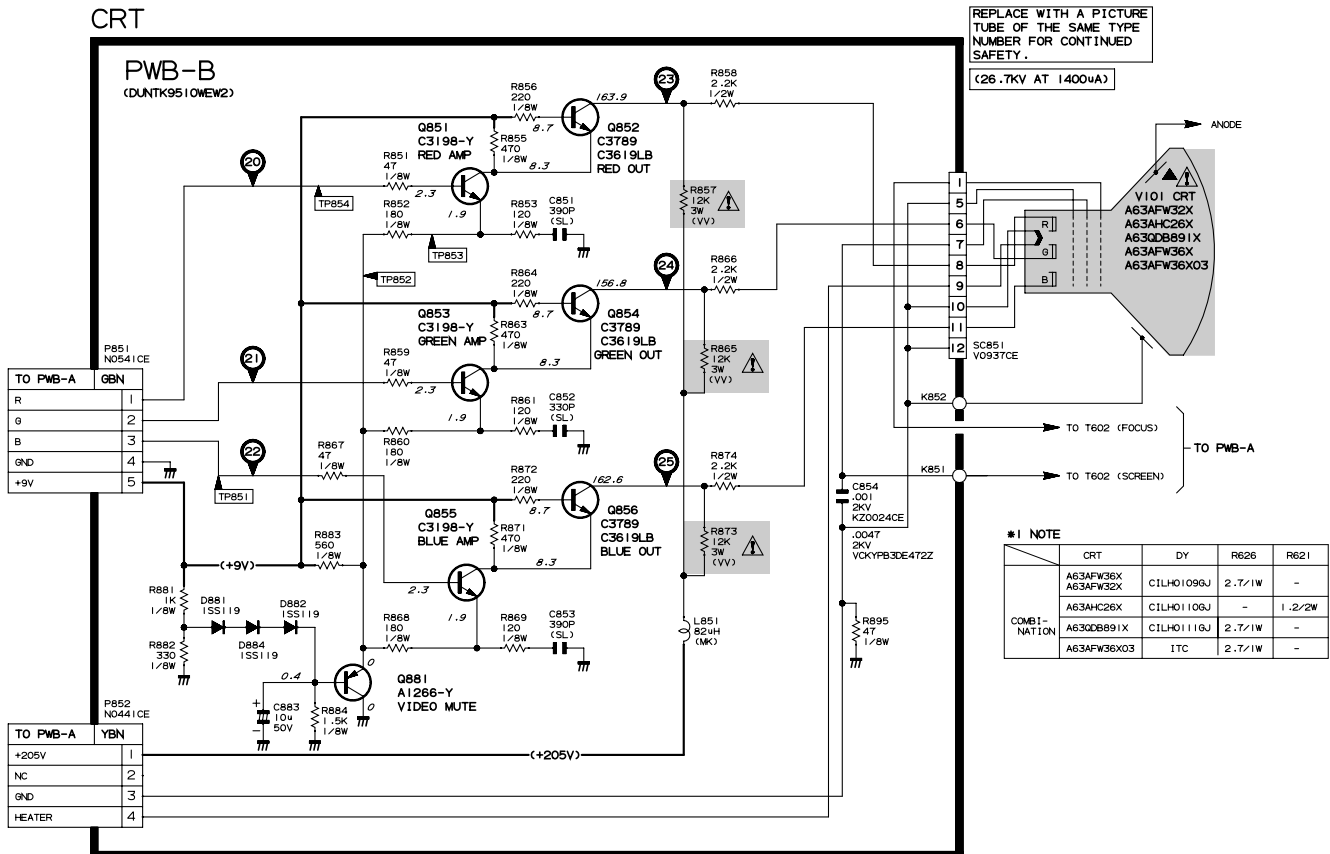
This circuit diagram is a standard one, printed circuits may be subject to change for product improvement without prior notice.

WAVEFORMS



SCHEMATIC DIAGRAM: CRT and FRONT A/V Unit

CRT



FRONT AV

